

Accel Stand-Alone DVR System

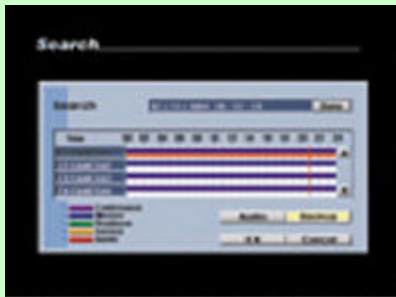
Sirius K316

KEY FEATURES

- 16 channels of real time display
- Maximum recording rate of 110 fps total
- High-quality image
- High speed network transmission
- Easy to use GUI
- Operate system by front panel Buttons and Jog Wheel, Mouse or IR Remote
- Front side USB for easy upgrades and to connect to external media
- Embedded Linux Operating System
- 16-channel video loop through
- Backup to CD-RW or USB



Surveillance Screen



Search Screen



Remote Access Display



SPECIFICATION

VIDEO	Input	16 Channel Composite Video (BNC)
	Loop Through Out	16 Channel (BNC)
AUDIO	Input	1 Channel (Connect to a microphone)
	Output	1 Channel (Connect to a speaker)
DISPLAY	Speed	30 fps per Channel, 480 fps total
	Split Screen	1, 4, 9, 16
RECORDING	Speed	110 fps total
	Resolution	352 x 240, 704 x 240 pixels
	Compression	Proprietary Compressions based on H.263
	Image Size	2 ~ 3 Kbytes in 352 x 240 pixels resolution
	Mode	Motion Detection, Sensor, Schedule
PLAYBACK	Display	480 fps max.
	Search Mode	Date, Time, Channel, Event
MONITOR	Output Port	1 Video Spot Output (BNC)
		1 S-Video
		1 SVGA
CONTROL	Sensor Input	4 points (Screwless Quick Connect)
	Control (Relay) Output	4 points (Screwless Quick Connect)
	Pan/Tilt/Zoom	16 Channel
CONNECTION	Network	10/100BASE-T using TCP/IP Protocol
	RS-232C	External 56KB Modem using PPP Protocol
BUILT-IN DEVICE	Storage	120, 240, 360, 500, 750 or 1,000 GB
	Backup	CD-R/W or USB
	PTZ Control	RS-422
INTERFACE	Operation Control	Wireless Remote Control
		Mouse
OTHERS	O/S	Embedded Linux
	Power Source	115 ~ 230 VAC
	Warranty	3 Years



Accel Security, Inc.
 2392 East Artesia Blvd., Long Beach, CA 90805
 Tel: 562.423.2600 Fax: 562.423.2620
<http://www.AccelSecurity.com>